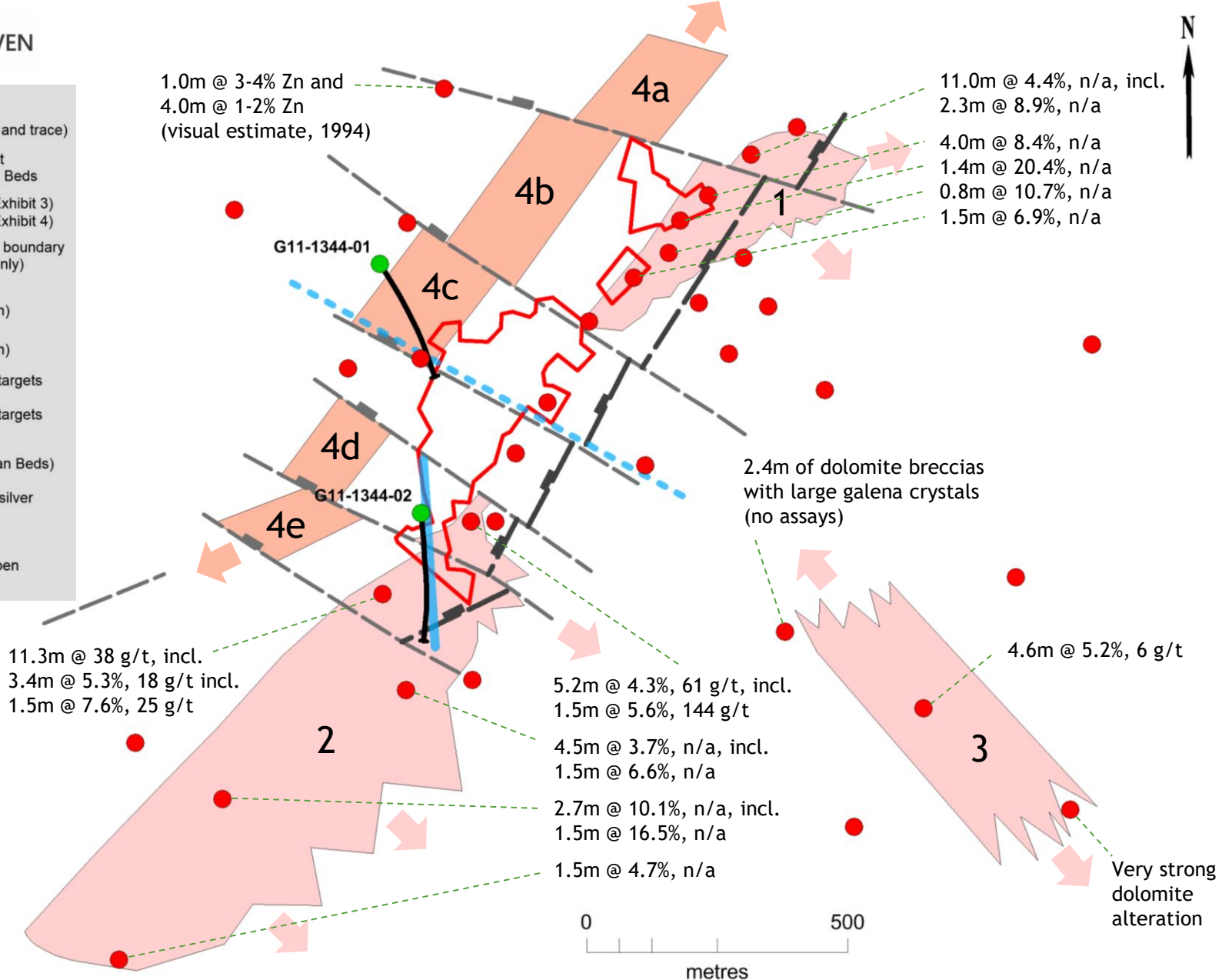




**Legend:**

- G11 DDH (collar and trace)
- Historic DDH that intersects Navan Beds
- Cross-Section (Exhibit 3)
- Cross-Section (Exhibit 4)
- Historic estimate boundary (in Waulsortian only)
- Ballinalack Fault (with dip direction)
- Other Faults (with dip direction)
- Navan Bed zinc targets (hanging wall)
- Navan Bed zinc targets (foot wall)
- % Zn + Pb (in Navan Beds)
- n/a Not assayed for silver
- g/t Silver
- ➔ Mineralisation open in this direction



**Exhibit 2**  
News Release dated August 7, 2018

